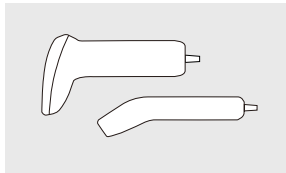


S1

Scanner Expert



USER'S
MANUAL

**compact handheld
1D/2D code scanner**

MANUEL
D'UTILISATION

**Lecteur de
code 1D/2D**

GEbruikers
HANDLEIDING

**compacte handheld
1D/2D code scanner**

BENUTZER
HANDBUCH

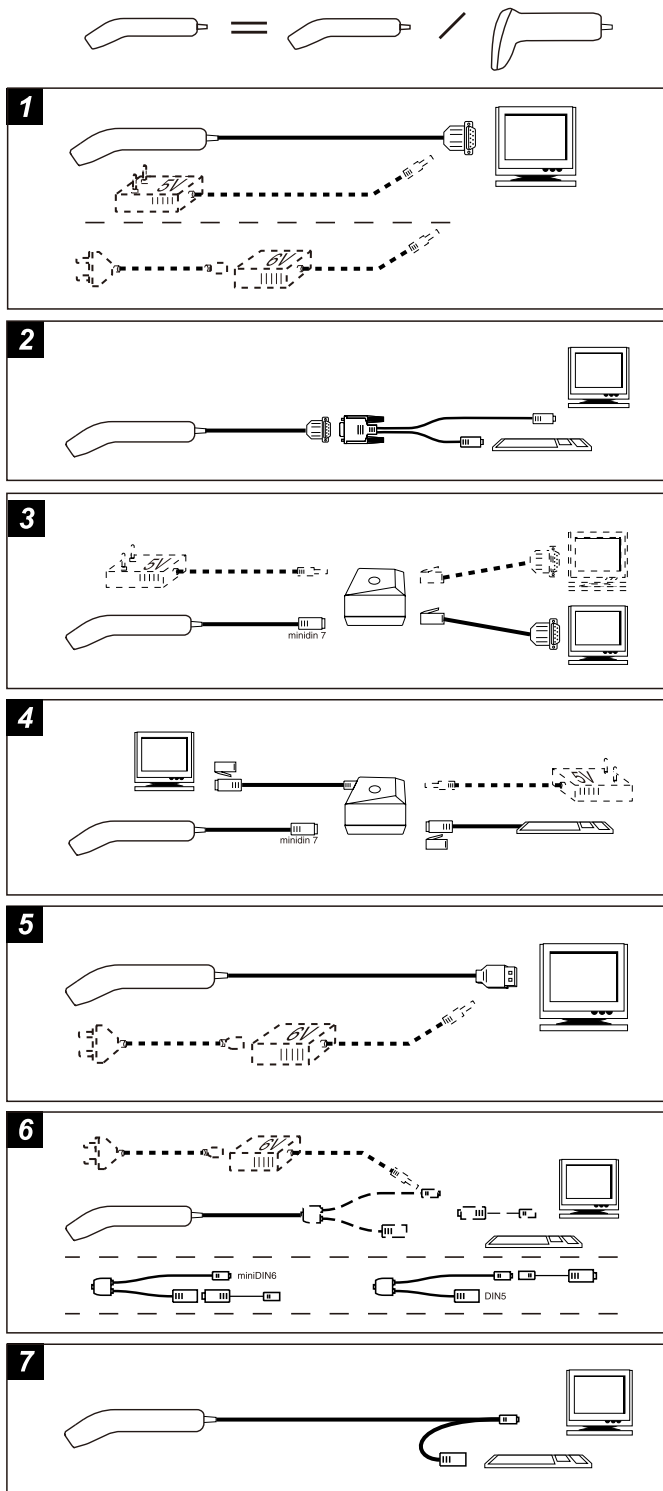
**1D/2D Code
Lesegerät**

ANVÄNDAR
MANUAL

**Kompakt handhållen
1D/2D-kodsläsare**

GUIDA
DELL'UTENTE

**Lettori manuali
di codice a 1D/2D**



INSTALLATION INSTRUCTIONS

ENGLISH

FIRST STEP: TURN POWER OFF !

- Exercise caution at all times when working with AC and DC-powered equipment.
- Turn off all your equipment before installation.
- It is strongly recommended to use Opticon cables and power supplies.

NEXT STEPS: CONNECT INTERFACE

- Find your interface type in the corresponding diagram (nr's 1, 2, 3, 4, 5, 6 or 7).
- If your interface will be connected via the keyboard: Disconnect the keyboard.
- Connect the scanner to the computer in accordance with the diagram and corresponding instructions (nr's 1, 2, 3, 4, 5, 6 or 7).
- Turn your computer equipment on.

DIAGRAM AND INSTRUCTIONS

See diagram on the left side of this page.

- 1 RS 232 interface cable connection**
For other RS 232 connections see diagram nr. 3.
 - Plug DB9 or DB25 connector into computer (terminal).
 - If power is required: Connect external power adaptor.
- 2 Y-cable connection**
 - Plug DB9 of scanner cable to Y-cable.
 - Plug longest wire to computer (terminal). *
 - Plug shortest wire to keyboard. *
 - * Type of connector depends on computer type.
- 3 P-Box connection, directly to computer**
 - Plug minidin connector of scanner into P-Box.
 - Plug cable from the P-Box into computer (host).
 - If RS232 wedge interface: Plug a second cable from P-Box into terminal.
 - If power is required: Connect external power adaptor.
- 4 P-Box connection, between computer and keyboard**
 - Plug minidin connector of scanner into P-Box.
 - Plug keyboard cable into P-Box.
 - Plug cable from P-Box into computer (terminal).
 - If power is required: Connect external power adaptor.
- 5 USB cable**
 - Make sure your computer runs Windows 98 or higher.
 - Plug USB-A connector of scanner into computer (terminal).
 - If power is required: Connect external power adaptor.
- 6 DIN5/MiniDIN6 Adapter connection**
 - At choice the connection type is DIN5 or MiniDIN6.
 - Plug the male side to computer (terminal).
 - Plug the female side to keyboard.
 - If power is required: Connect external power adaptor.
- 7 MiniDIN6 connection**
 - Plug the male side to computer (terminal).
 - Plug the female side to keyboard.

If you have any questions, please contact your local dealer or Opticon.

CAUTION: This user's manual may be revised or withdrawn at any time without prior notice.

Copyright 2003

Opticon Sensors Europe B.V.

All rights reserved.

This manual may not, in whole or in part, be copied, photocopied, reproduced, translated or converted to any electronic or machine readable form without prior written consent of Opticon Sensors Europe B.V.

LIMITED WARRANTY AND DISCLAIMERS

BY OPENING THE PACKAGE OF THIS PRODUCT YOU AGREE TO BECOME BOUND BY THE LIABILITY AND WARRANTY CONDITIONS.

IN ALL CIRCUMSTANCES THIS MANUAL SHOULD BE READ ATTENTIVELY, BEFORE INSTALLING AND/OR USING THE PRODUCT.

Serial number

A serial number appears on all Opticon products. This official registration number is strictly related to the device purchased. Make sure that the serial number appearing on your Opticon device has not been removed. Removing the serial number might affect the warranty conditions and liability disadvantageously, so please be strict at maintaining the label with serial number on the Opticon product.

Warranty / Warranty period / Liability

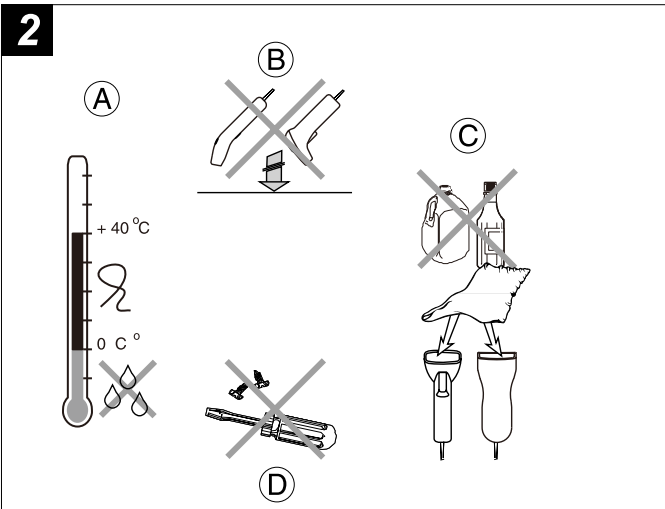
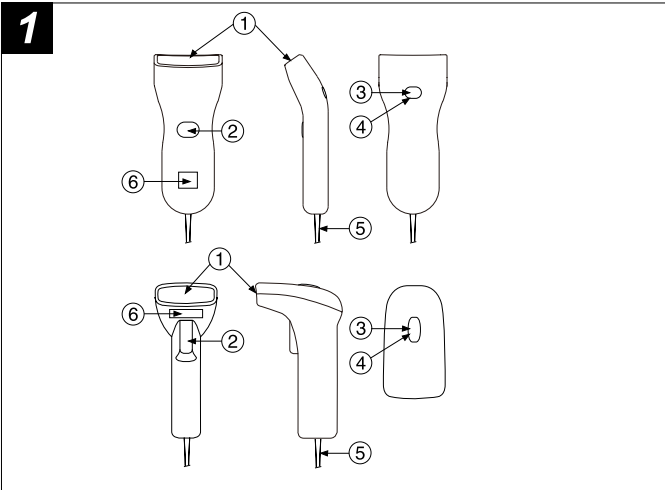
Unless otherwise agreed in a contract, all Opticon products are warranted for a period of one year after purchase, covering defects in material and workmanship. Opticon will repair or, at its opinion, replace products that prove to be defective in material or workmanship under proper use during the warranty period. Opticon will not be liable in cases where modifications are made by the customer. In such case the standard repair charge will be applicable. The standard charge for repair will also be applicable in cases where no defect is found at all. These rules also apply for products that are still under warranty. Under no circumstance will Opticon Sensors Europe, be liable for any direct, indirect, consequential or incidental damages arising out of use or inability to use both the hardware and software, even if Opticon has been informed about the possibility of such damages.

Packaging

We recommend that you save all packing material, as it should be used whenever you need to transport your scanner (eg. for service). Damage caused by improper repacking is not covered by the warranty.

Trademark

Trademarks used are property of their respective owners.

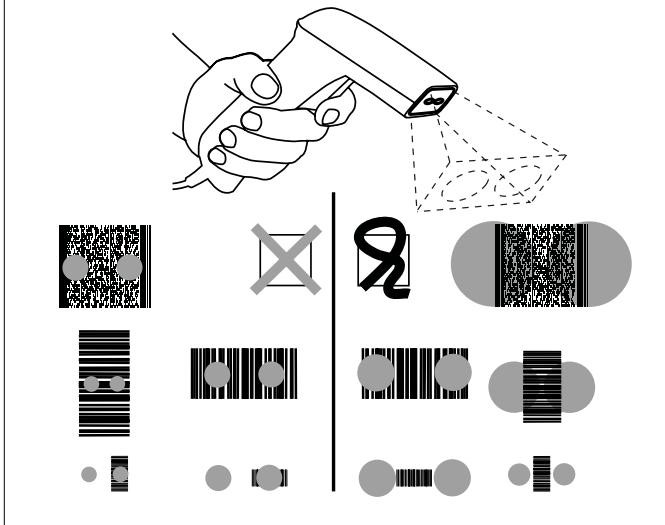
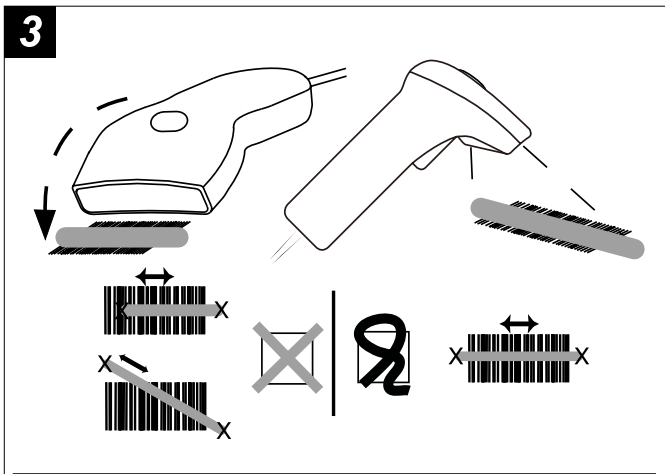


1 DETAILED VIEW

- 1. Reading window**
The scanning engine behind this window will read the codes. **Never obstruct this window!**
- 2. Trigger key**
Only available on models with trigger key. If enabled, the trigger key must be pressed to activate the scanner to read the codes.
- 3. LED indicator**
If enabled, read results of the scanner are indicated by a flashing LED, for example when a code has been read.
- 4. Buzzer/Beeper**
If enabled, a beep tone indicates when a code has been successfully decoded.
- 5. Cable with connector**
To connect the scanner to the computer equipment connection accessories as shown in the installation instructions might be required.
- 6. Scanner label**
A label is affixed to scanner and/or cable, and contains serial number. **Do not remove it!** Avoid contact with water.

2 HANDLING INSTRUCTIONS

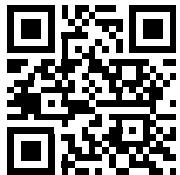
- A. Temperature conditions**
Use in area's between 0 and 40 °C. Do not expose the scanner for a long time to direct sunlight, or near direct heat. For use under extreme conditions, for example freezing areas or temperatures higher than 40 °C, please contact Opticon or your local dealer. Avoid contact with water.
- B. Shock**
Do not subject the scanner to strong impact, do not throw or drop the scanner from great heights.
- C. Cleaning of the scanner**
Clean the reading window regularly to maintain optimum reading performance. Clean the exterior of the scanner by wiping it with a soft, lightly moist cloth. Do not use a high pressure cleaning method. If a cleaning liquid is needed, only use one drop of a non-abrasive household liquid.
- D. Maintenance**
There are no user-serviceable parts inside the scanner. So do not try to take it apart. In case of serious malfunction, please consult Opticon or your local dealer.



3 READING CODES

- Check the scanning engine**
Is the scanning engine on? Is a red light beam visible? (located behind the reading window) If not, press the triggerkey. For models without a triggerkey check the cable connection.
 - Approach the code**
 - Point the reading window of the scanner in the direction of the code.
 - The code should fit from margin to margin in the light beam width.
 - Move the scanner close to the label.
 - Check the data at the connected computer device.
- A "Good Read" means that the scanner has effectively recognised and decoded the code. In most cases, the application program will provide an indicator signal or a buzzer signal to indicate a good read to the user.
- When the read is incorrect you can try again, paying attention to the instructions below.

4 FACTORY DEFAULT SETTING



? TROUBLE SHOOTING

- General checks:**
- Make sure the scanner is installed properly.
 - Check the power supply of all devices.
 - Is the reading window of the scanner clean?
 - Are the codes on the labels damaged?

- Scanner does not operate:**
- Check the triggerswitch
 - Check if you connected the right interface

- Code could not be read:**
- Check that the width of the code does not exceed the width of the light beam.
 - Change the angle between the code and the scanner.
 - Change the distance between the code and the scanner.

If you can not solve the problem:
Contact Opticon or your local dealer.

When the scanner needs to be repaired:
The label with serial number should be present. If returning the scanner, please use the original packaging to minimise the chance of damage.